

DRIVING FORCE FOR A BETTER COURSE

www.flovel.net

THREE GENERATIONS OF TRUST

Established in 1971, FLOVEL is run by the third generation of the promoter family and has a long-term commitment towards Hydropower. It has constantly evolved over the 53+ years of its existence.



2023
Factory Expansion

2019
FLOVEL moved into a new corporate office

2016
Implementation of ERP package (SAP)

2010
JV with TB Hydro, Poland for valves manufacturing

2009
Technical Collaboration with Karsbol Consulting AB, Sweden

2008
Completion of state-of-the-art manufacturing facility

2006
NEW ERA FLOVEL

2000
VA Tech acquires Sulzer Hydro
VA Tech Escher Wyss FLOVEL Ltd.

1995
JV – Sulzer Hydro
Sulzer FLOVEL Hydro Ltd.

1971
FLOVEL incorporated by Dr. R.N. Kar & M. Kar

FLOVEL has consistently delivered high performance machines and won Customers' trust. We bring together Technology, Engineering and Commitment to be a Driving Force for a Better Course.

From water to wire

320+
projects
executed
across 15 countries

53+ years
of global Hydro
experience

350+
employees

6,800+ MW
capacity served

700+ units
delivered

Five star commitment



Three generations of trust and 53+ years of expertise

We have been in the Hydropower business for three generations and have a long-term commitment to our Customers. Each project is enriched by our expertise, built over 53+ years of experience.



Customer First Principle

We assure our Customers that you come first. We work closely with our Customers to deliver optimal solutions, from contracting to post-implementation support.



Zero Compromise Engineering

We follow Zero Compromise based Engineering approach to deliver best in class machines. It is the base for our leadership position and what leads our Customers to success.



State-of-the-art manufacturing

We offer the most modern setup for the production of turbines and valves. FLOVEL's key personnel and co-workers in all functions are among the best in the world.



Fast Forward Support

We assure that after a successfully installed project, you will continue to be the focus, because there is still a lot to do in terms of ongoing support.

Success is a spiral, not a door

All things of importance – Project Success, Customer Relationships, Learnings – follow a spiral path. And with each turn we focus on moving forward, getting better and faster. The two things that remain constant in our journey are a laser focus on Performance & serving the Customers' needs. This is what makes us a Driving Force for a Better Course.

Our vision is to be a technology leader, and to be amongst the top Hydropower equipment manufacturers globally, by leveraging technological and commercial acumen, to exceed Customer expectation and to be the most respected brand.



from left to right:

Bhaskar Gupta
Director (Sales & Marketing)

Maharaj Kar
Chairman

Gautam Kar
Managing Director

Sunil Dutt Sharma
COO

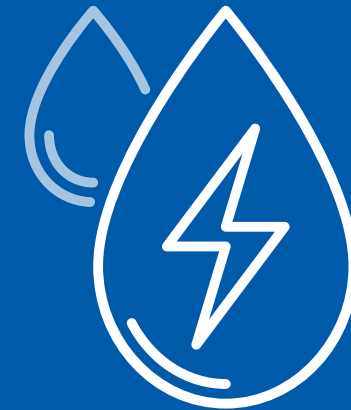
**Never lose
the focus
on performance**



Dak Ba HPP, Vietnam
(2 x 17,250 KW)

Delivering excellence

The strength of FLOVEL
is to offer water-to-wire
packages for



S&M Hydro
Small & Medium Hydro
(up to 100 MW units)



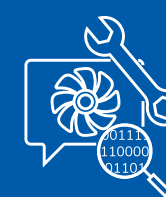
RenServ
Renovation,
Modernisation and
Upgradation

Business Areas

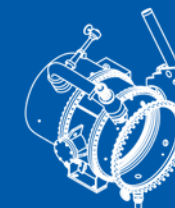
S&M Hydro



RenServ



Valves



Mechanical
BOP and
Auxiliaries



Electrical
BOP



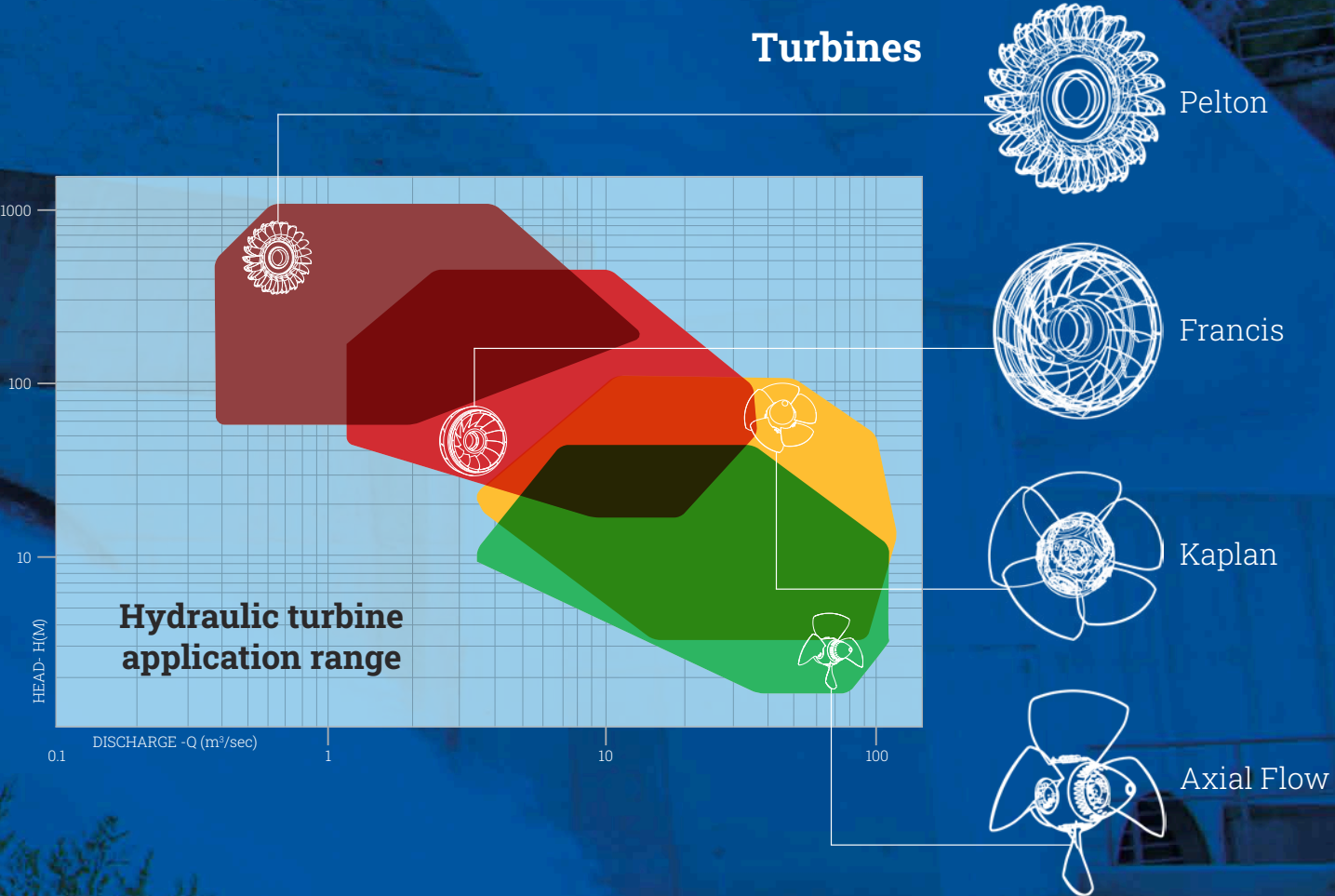
Governor,
Automation
and SCADA



We follow Zero Compromise Engineering approach, to deliver
best in class Excellence across the Business Areas we operate in.
Our solutions are durable and deliver high performance.

Product overview

It is our commitment to produce quality in all spheres of operation. FLOVEL is a single source supplier and integrator of all components of Hydropower plants including inlet valves, hydraulic turbines, generators, control systems, switchyard equipment and much more.



Pelton Turbines

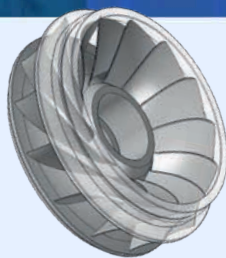
for high head applications



- » Fully Forged or Cast runner
- » Runner mounted on extended shaft of the generator
- » Full unit assembled in factory and shop tested
- » Internal or external Servomotor options
- » Simple interface with civil works
- » Guarantees for efficiency based on model test

Francis Turbines

for medium head applications



- » Weld fabricated or Forged runners
- » Library of 40 models available to choose from
- » Guarantees for output, efficiency and cavitation based on model test
- » Runner mounted on extended shaft of the generator
- » Common base frame concept for horizontal units

Kaplan Turbines

for low head applications



- » Oil free runner hubs
- » Internal or external Servomotor option
- » Maintenance free water-lubricated guide bearing
- » Blade dismantling without runner removal
- » Library of 20 models available to choose from
- » Guarantees for output, efficiency and cavitation based on model test

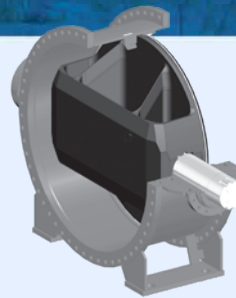
Axial Flow Turbines

for very low head applications



- » Library of 20 models to choose from
- » Oil free runner hubs
- » Internal or external Servomotor option
- » Maintenance free water-lubricated guide bearing
- » Blade dismantling without runner removal
- » Guarantees for output, efficiency and cavitation based on model test

Valves



TYPES

- » Butterfly Valves
- » Spherical / Ball Valves
- » Pressure Relief Valves etc.

Mechanical BoP & Auxiliaries

SCOPE

- » Oil Pressure System for turbine, MIV & PPV
- » Cooling Water System
- » Drainage System
- » Dewatering System
- » Crane
- » Fire Fighting System
- » Ventilation & Air Conditioning System
- » Compressed Air System
- » Bearing Lubrication System
- » Oil Filtration System
- » Flow & Level Measurement System
- » Vibration Measurement System

Electrical BoP

GENERATOR, AVR & AUXILIARIES

- » Control & Protection System
- » Generator Transformers
- » AC-DC distribution
- » LV and MV-switchgear
- » Bus Ducts
- » Cables, HV, LV, Control & instrumentation
- » Outdoor Switchyard equipment
- » Integration of automation system, governing system, electrical system, mechanical system etc.
- » Digital automation of mechanical, electrical, LV system & other auxiliaries

Governor, Automation & SCADA

iNDUS

- » Digital Governor control
- » CAM optimization algorithm
- » Control & Monitoring
- » Historical data
- » Remote monitoring
- » Email reporting
- » Maintenance

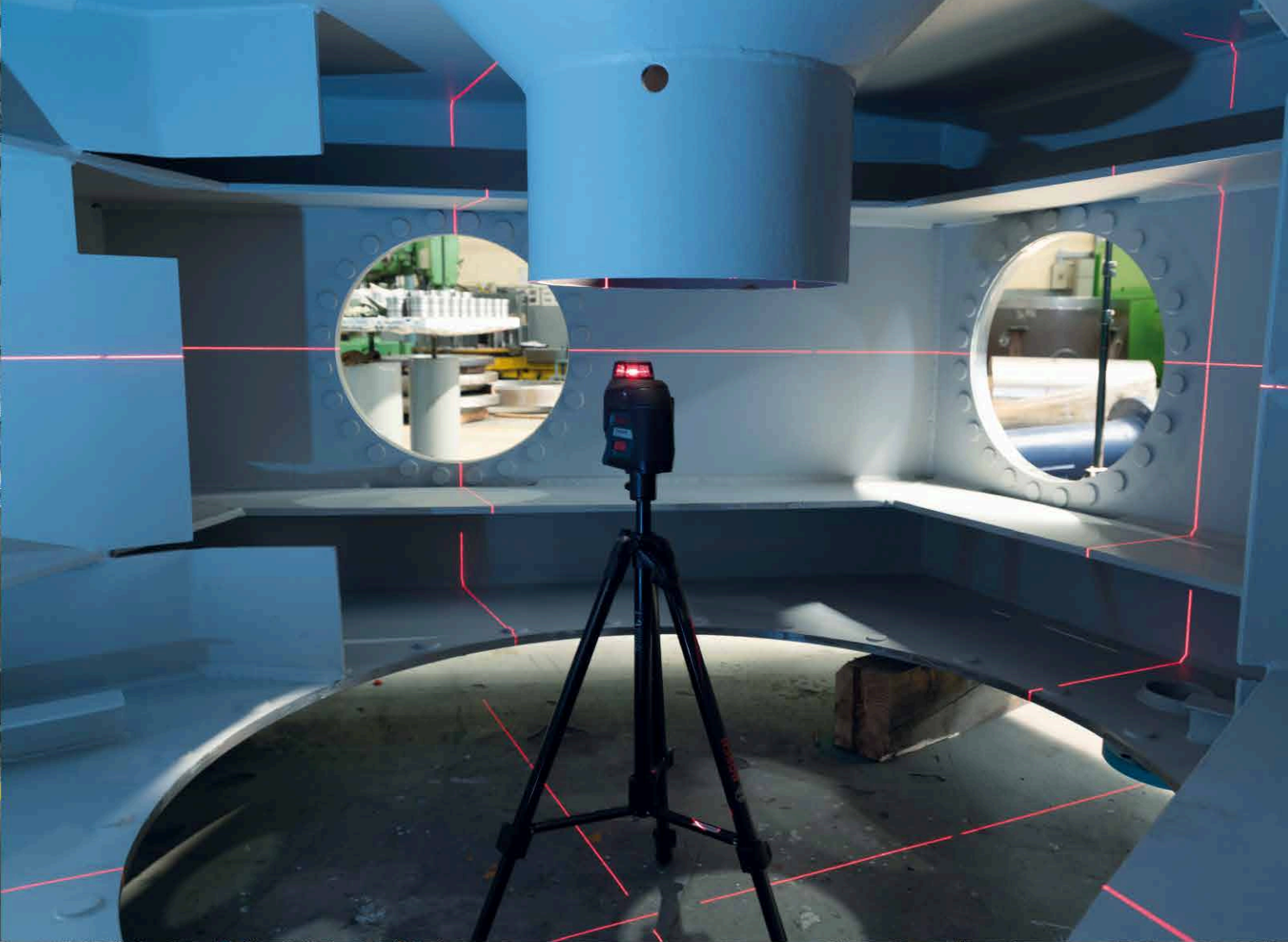


QUALITY
MADE WITH
PASSION



Our manufacturing facilities. Where excellence is made.

Our manufacturing facility, spread over 22,000 m² area, is equipped with latest machines capable of handling large sizes (up to 100 MW units). They are operated by our qualified and experienced team. We have robust systems and processes and follow global safety and testing protocols, to deliver machines made for high performance and durability.



Relationships worldwide

Our principle is to be close to the Customer – always and everywhere.

6,800+ MW
capacity served

350+
employees

700+ units
delivered

320+ projects
executed across
15 countries

53+ years
of global Hydro
experience

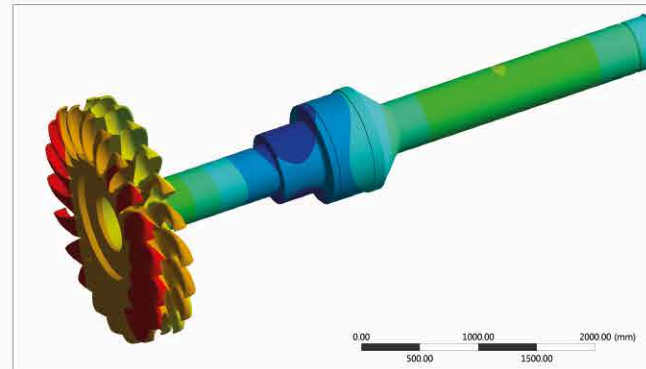


Research & Development: Our DNA

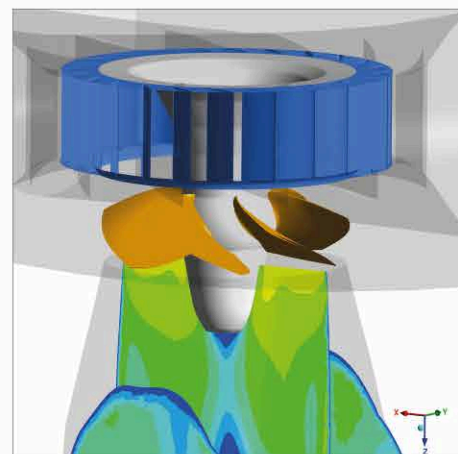
"Innovation" is the keyword of success in our business. It is our priority to invest time and money into research, development and innovation. Combination of state-of-the-art technology and quality is the base for our leadership position. It is our responsibility to deliver solutions with the best interest of Customers in our mind.



Model test



FEM



CFD

Digital Intelligence Ecosystem

Advance Digitalization solution
for Hydropower plants



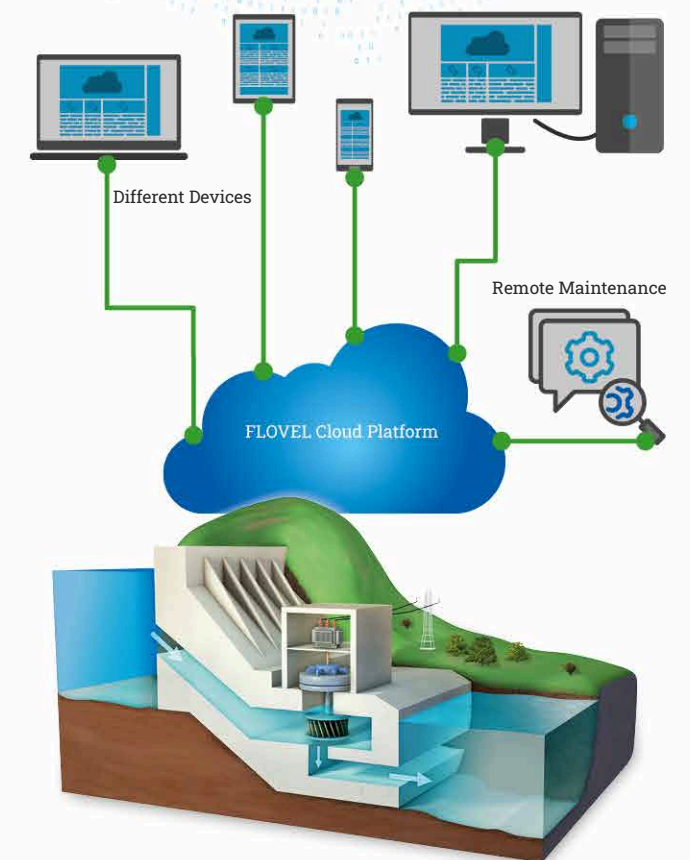
Tailor made for the Hydropower plants, it is designed keeping in mind the needs of the Hydropower plants and is easy to operate and service. It offers a complete Digital Intelligence Ecosystem that pushes up the performance and puts the plant in your pocket.

Key features of iNDUS:

1. Digital Turbine Governor
2. Plant Level Software Interface for Control & Monitoring
3. Real-time Remote Monitoring (Mobile / Laptop / LSD)
4. Alarms Management, Push Notifications, Email Reporting
5. Gateway for Load Dispatch Center Communication
6. Real-time & Historical Data Storage, Integrated Data Security
7. Report Management

Key advantages of iNDUS:

1. Versatility: Solution for all type of turbines & capacity. Can be deployed for new and existing plants.
2. Flexibility: Has multiple plug and play functionality and features.
3. Easy: User friendly Interface. Easy to maintain, operate and deploy.
4. Cost Effective Solution: The system is made specially for Hydropower plants thus making it easy to operate and service. No need to have experts of SCADA system.
5. Secure: The system is designed with highly integrated security for data protection & safety.



Fast Forward Support

We actively support our Customers throughout the project life cycle. From periodic maintenance activities, responding to any operational challenges or carrying out Renovation & Upgradation activities, FLOVEL's aftersales support is fast and efficient.

Advantages of Fast Forward Support:

- The operation of the system is maintained, which brings maximum profitability
- The system runs efficiently
- Failures are avoided
- The system is always state of the art
- Continuous maintenance increases the lifetime

Hotline & Online Support

Maintenance Contracts

Repair Services

Service

Spare Part Support

Upgrades

support@flovel.net

With everything that comes with our daily business we reflect on our core-values.

Driving force for a better course.





Get in touch

FLOVEL Energy Private Limited

Vatika Mindscapes, Suite 101-A, Tower-B,
12/3, Mathura Road, Faridabad – 121 003,
Haryana, India

Phone: +91 129 4090600

Fax: +91 129 4090650

Email: contact@flovel.net

MANUFACTURING FACILITIES

FLOVEL Energy Private Limited

Mitrol – Deeghot Road (Near Railway Crossing),
72 KM Stone, Delhi-Mathura Road,
District Palwal – 121102,
Haryana, India

Phone: +91 7082214002, 3 & 4

VALVES PARTNER

TB HYDRO FLOVEL Valves Private Limited

Vatika Mindscape, Suite 101-A, Tower-B,
12/3, Mathura Road, Faridabad – 121 003,
Haryana, India

Phone: +91 129 4090600

Fax: +91 129 4090650

Email: contact@tfvalves.com

Web: www.tfvalves.com



www.flovel.net

FEPL/04/Image/eng./JULY/2024
Data and illustration are subject to change
© FLOVEL Energy Private Limited

Design by Faschingbauer & Schaar, Austria